

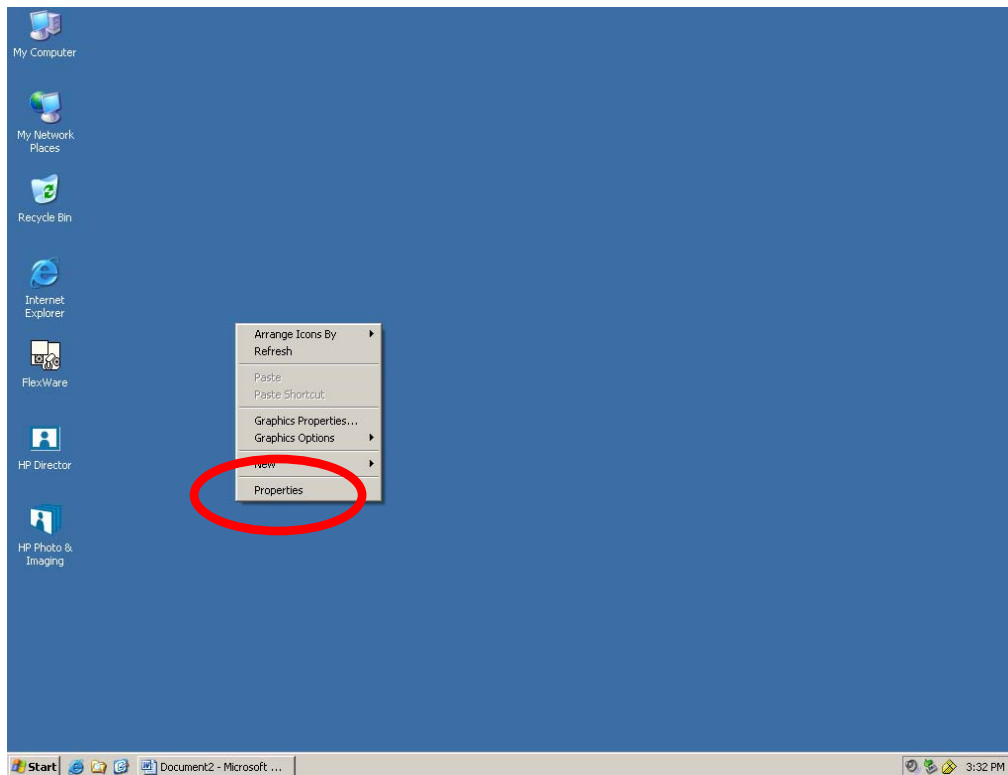
PROCEDURE FOR CHANGING THE DISPLAY SCREEN RESOLUTION FOR OPTIMAL VIEWING OF THE SURVEY

If you have not already done so, you may want to print out these instructions to use as a reference while changing your screen resolution.

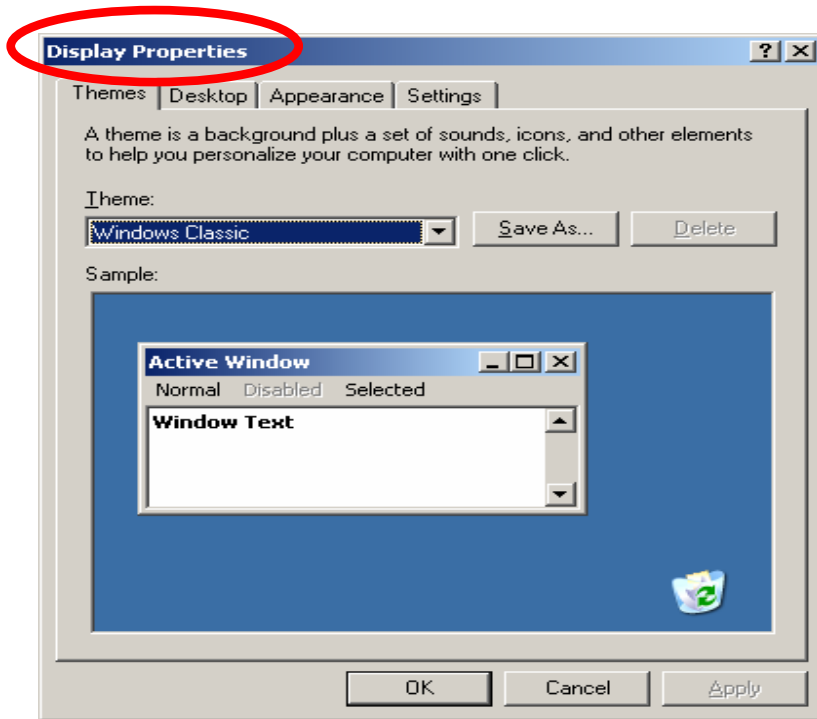
You should either close this window or minimize it before continuing with the Survey.

TO VERIFY AND/OR CHANGE THE EXISTING DISPLAY SCREEN RESOLUTION FOR THE SURVEY, PERFORM THE FOLLOWING STEPS:

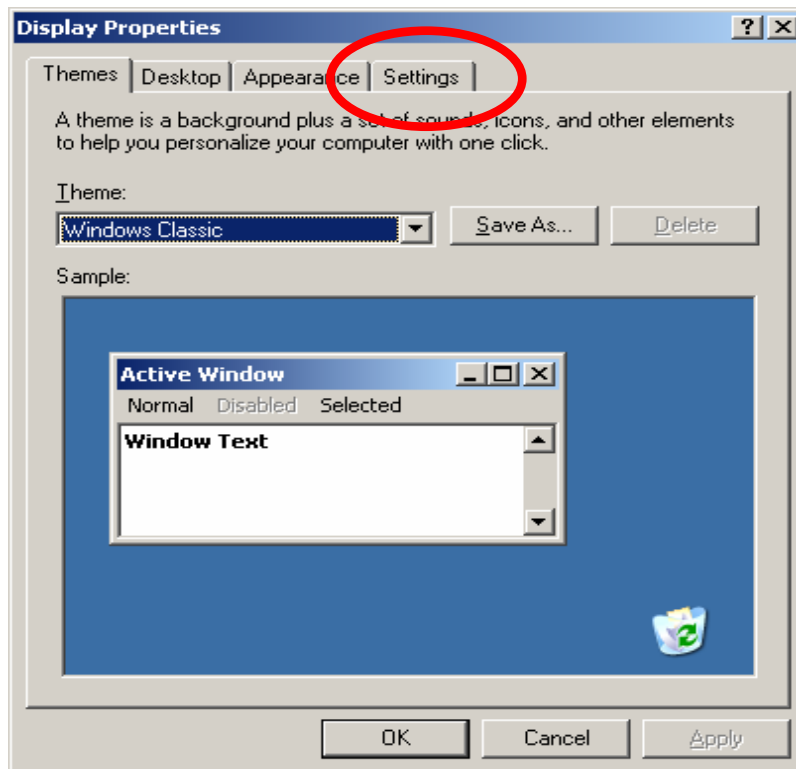
1. At the desktop, click the right mouse button with mouse pointer located anywhere on the screen. A box will appear as follows:



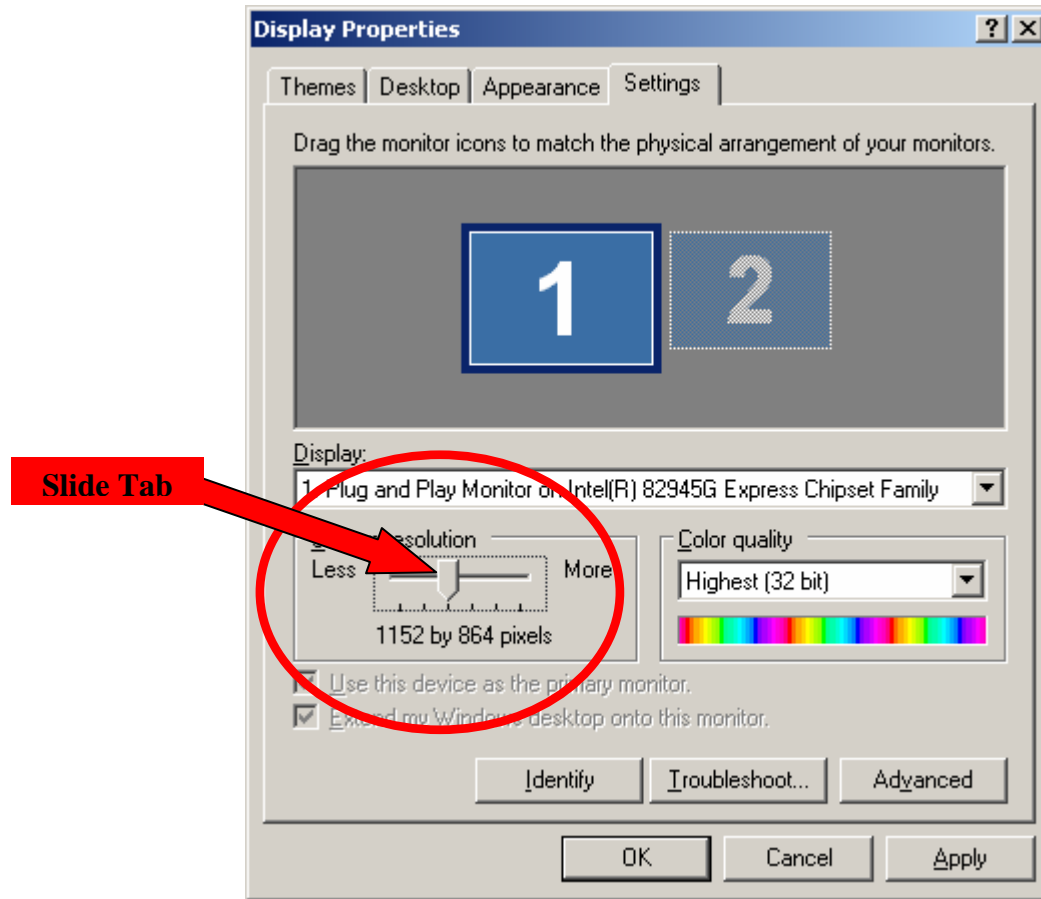
2. Place the mouse pointer over “**Properties**” that appears at the bottom of the window from step 1 as indicated above and do a left mouse button click to select “**Properties**”. This will reveal the “**Display Properties**” window as shown below:



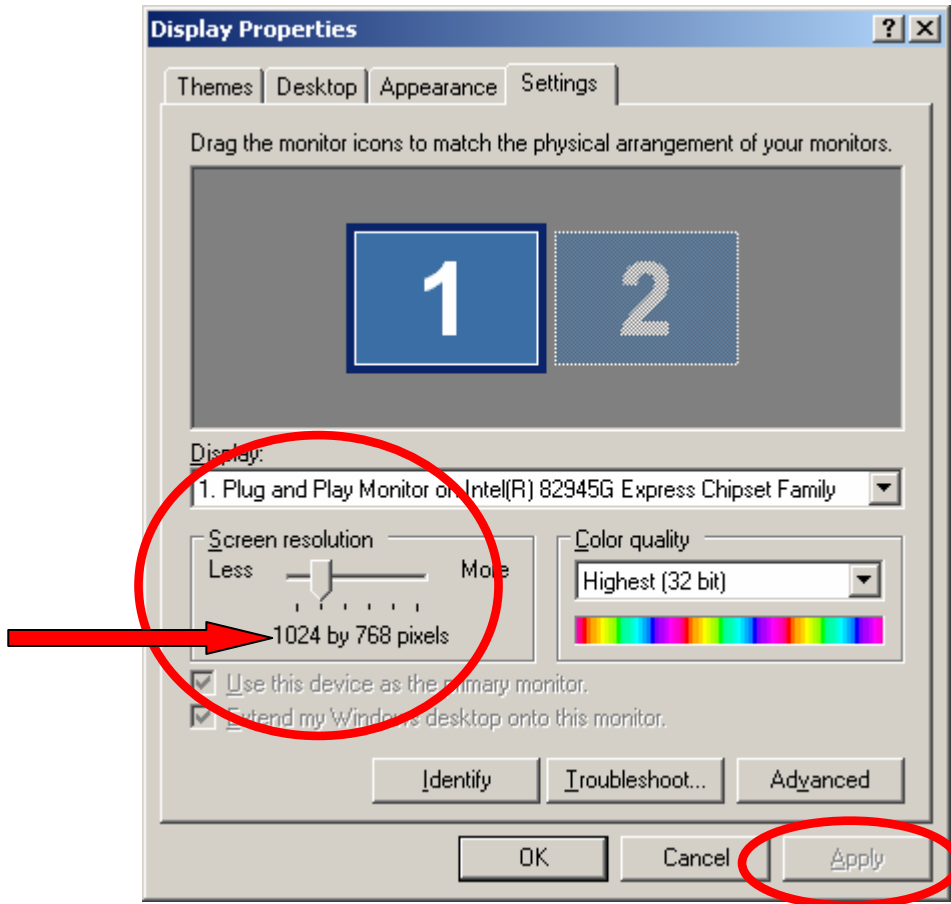
3. Place the mouse pointer over the “Settings” tab and do a left mouse button click on “Settings” tab:



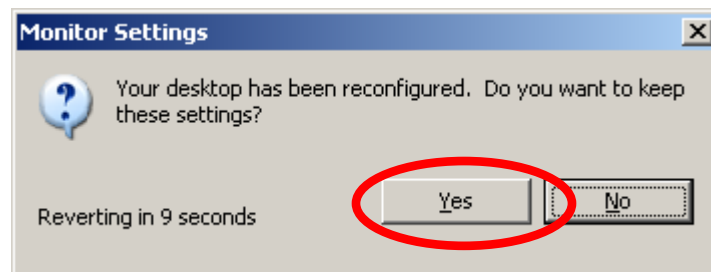
4. The **DISPLAY PROPERTIES – SETTINGS** window will appear similar to that shown below:



5. The resolution is shown in the **SCREEN RESOLUTION** area highlighted above. Record the current resolution so that you can return to this setting after completing the Survey, if desired.
6. If the resolution is not set to “**1024 by 768 pixels**”, place the mouse pointer over the **slide tab**, hold down the left mouse button, and drag the **slide tab** to the left or right to display “**1024 by 768 pixels**” as shown below. When “**1024 by 768 pixels**” is shown in the **SCREEN RESOLUTION** area, release the left mouse button.



7. Place the mouse pointer over the “**Apply**” box and do a left mouse button click to save the changes. The screen may go blank for a short period of time and then reappear with the new resolution. A prompt box, “**Monitor Settings**”, will appear asking to confirm the changes as shown below:



8. Place the mouse pointer over the “**Yes**” box and do a left mouse button click to accept the changes. You are now ready to take the Survey.

It is recommended that you either close this window or minimize it before continuing with the Survey.

9. Complete the Survey.
10. After completing the Survey, you may use this same procedure to return your display setting to its original setting that you recorded in step 5 above, if desired.